

Welcome Around ITER, Welcome to the South of France

David LAURENT

Ready to help you with the Welcome Around ITER network



Disclaimer: The views and opinions expressed herein do not necessarily reflect those of the ITER Organization

7 & 8 April 2021

Remote ITER Business Meeting

SUMMARY

- Support provided by the Welcome Around ITER
- Overview of the economy of the South of France Region
Provence Alpes Côte d'Azur
- Testimonies from 2 companies



Welcome Around ITER, Welcome to the South of France

Support provided by the Welcome Around ITER

Welcome Around ITER, who are we ?

A strong regional network to welcome ITER suppliers and provide services matching their needs.



Services from the Welcome Around ITER

Free, confidential and personalised assistance.



Immigration

Accommodation

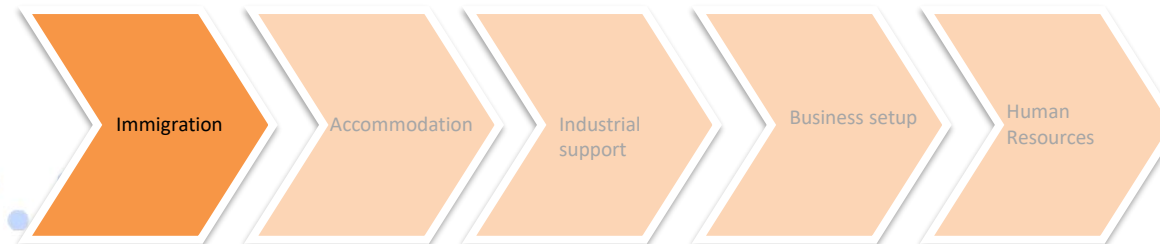
Industrial
Support

Business setup

Human
Resources

How can I be helped with official procedures and work formalities ?

- **Guidelines have been set up for foreign companies to inform them about their obligations with regards to French social and tax regulations** and to facilitate administrative formalities (including short or long stay visas, residence permit and work permit) for companies seconding their employees to the ITER programme or willing to set up a business in France.
- **Entry and work formalities: Direccte PACA/OFIG** with embassies and consulates
- **Residence formalities at « Guichet interdépartemental ITER »:** a unique entry point has been set up for formalities to be fulfilled by foreign companies and their workers at Sous-Préfecture Aix-en Provence.

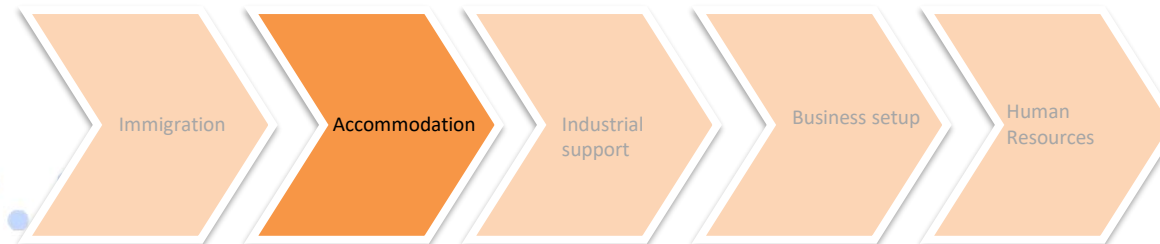


aif-wai@cea.fr

How can I be helped with accommodation and transportation solutions ?

- Listing of accommodations near the ITER site (<35mn drive).
- Easier access to information on existing services and financial assistance to employees for housing.
- Information on existing passenger transport solutions.
- Referencing of relocation operators and destination services (paid services).

International School from nursery to high school in Manosque

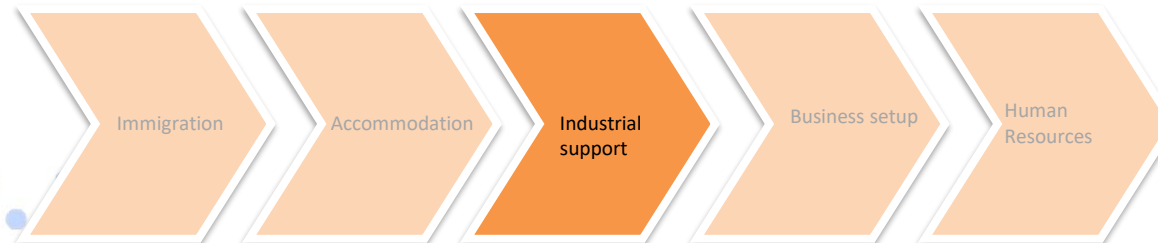


aif-wai@cea.fr

How can I find industrial partners, subcontractors and local support to work with me on the ITER project ?

- Facilitating partnerships with French ITER industrial Committee's members, a network of 300 French industries among which 60% are located in SUD Region : www.c2i-directory.fr
- Finding subcontractors and local support with support of the regional network of Chambers of Trade and Industry
- ITER Business Forum.

Save the date : 5-7 April 2022



aif-wai@cea.fr

How can I be helped to find office premises and set up my business ?

- A network of local Economic Development Agencies to seek premises (office and storage).
- Meeting with key regional economic actors.
- Economic context information.
- Support to develop activities.

7 local Economic Development Agencies

ALPES DE HAUTE
PROVENCE
AGENCE DE DÉVELOPPEMENT

HAUTES ALPES

TEAM
CÔTE
D'AZUR

PROVENCE
PROMOTION

CCI VAR
Agence de
Développement
Économique

NAUCLUSE • PROVENCE
ATTRACTIVITÉ

EUROMÉDITERRANÉE
Établissement Public d'Aménagement

Immigration

Accommodation

Industrial
support

Business setup

Human
Resources

aif-wai@cea.fr

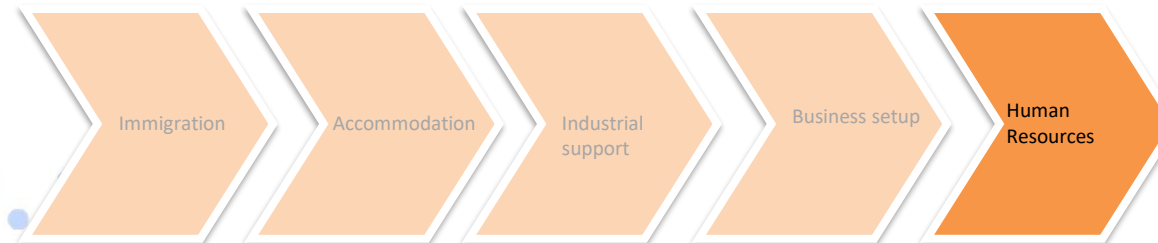
How can I be helped during the recruitment process?

- Identify available talent pools.
- Select & preselect candidates based on your specific requirements.
- Disseminate Job offers : **833 job offers** since 2018.
- Training courses.
- Find financial support and aids

Welding Institute (Institut de Soudure)



Public support to increase the number of welders trained locally.



aif-wai@cea.fr

More details about the Welcome Around ITER ?



Contact us : aif-wai@cea.fr

Immigration

Accommodation

Industrial
Support

Business setup

Human
Resources

Overview of the economy of the South of France

Region – Provence Alpes Côte d’Azur

WELCOME TO THE SOUTH OF FRANCE



Ideal Location

The crossroads between
Europe, Africa and Middle East



Open to Talent & Innovation

#1 University in France:

Aix-Marseille University (77 000 students)

161 000 total students (18 000 int. students)



Work-Life Balance

From Mountain To Sea:

135 marinas & 70 winter sports resorts



TRANSPORT AND LOGISTIC



**Daher, Logistics Services
Provider for ITER**

105 km to deliver ITER
components from Fos
harbour to ITER site.



Overview of the economy of the South of France Region – Provence Alpes Côte d’Azur

A HUB FOR PEOPLE, GOODS AND DATA

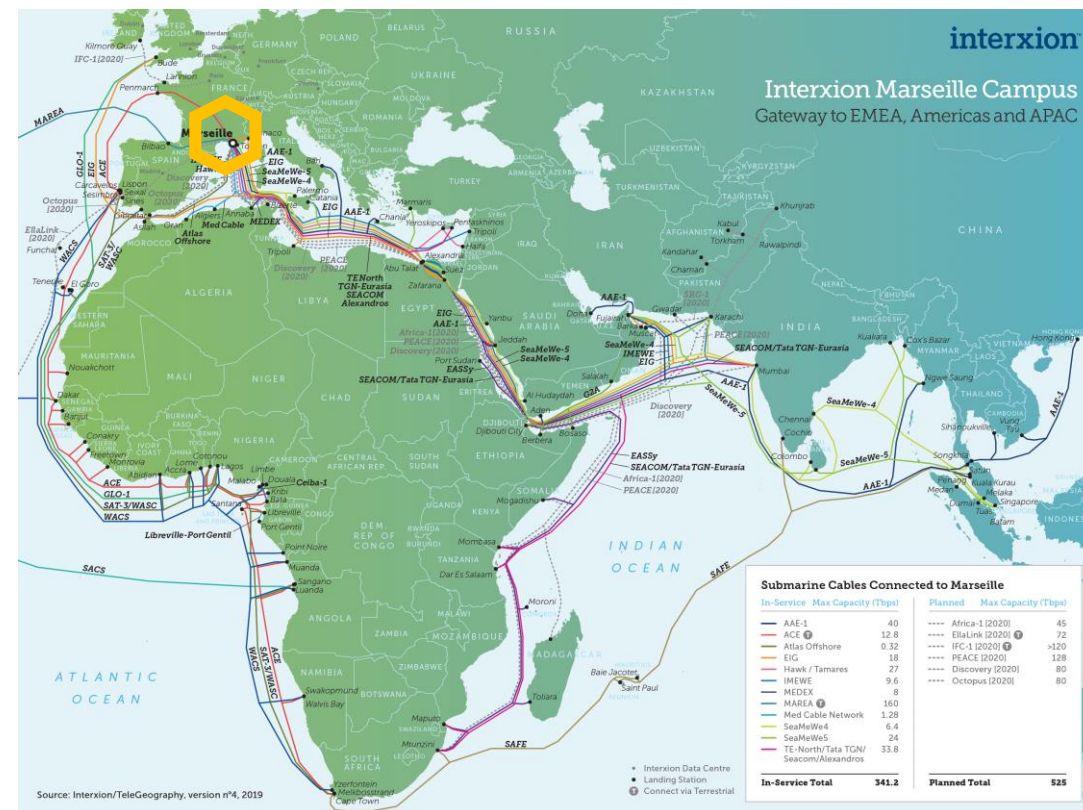
5 000 000 residents

The **only** French region with 3 major metro areas



GDP
€170B

more than
2200
international
companies





TALENTS

- One of the leading **destinations for young talents** in France
- **Company executives are drawn to the region: 215 000** managerial staff present in the territory
- **Exceptional natural environment and quality of life**



#2 region in France for R&D investment (FDI)
29 000 R&D employees including 13 800 researchers
300 public research centers

Overview of the economy of the South of France Region – Provence Alpes Côte d'Azur

INDUSTRIAL STRENGTH

Energy & Environment

Aeronautics & Naval

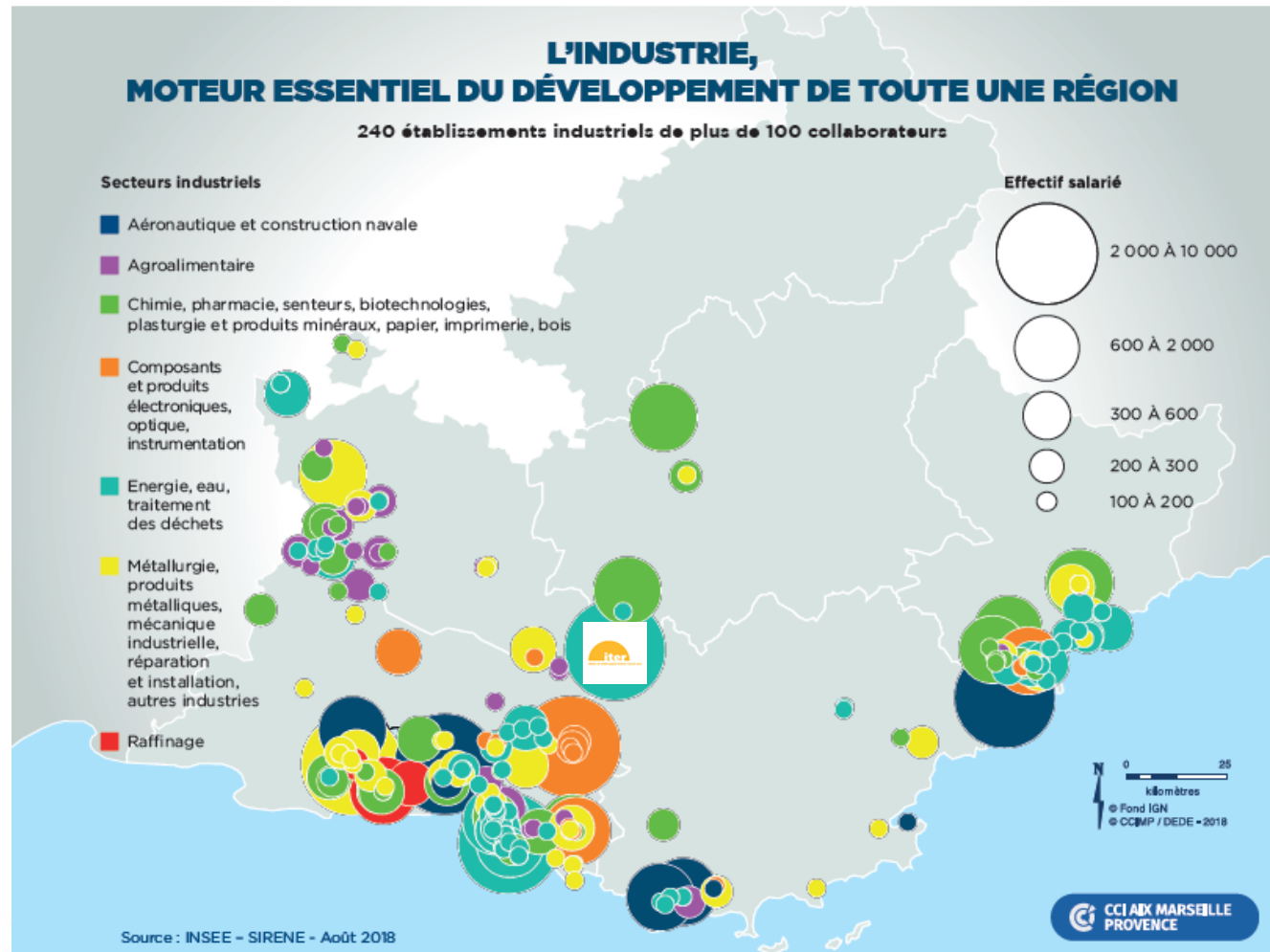
Manufacturing

Electronics

Chemical

Oil refinery

Food industry



426 000

direct and indirect
employment for the
industrial sector

59% South of France
region's export sales are
made by the industrial
sector.

FOCUS ON R&D ECOSYSTEM



Capenergies is a network of energy stakeholders that seeks to develop synergies between the worlds of academia and industry, around three central themes including fusion.

550 members



The French Alternative Energies and Atomic Energy Commission (CEA) is a key player in research, development and innovation in low carbon energy.

At CEA Cadarache : 2,400 employees - [WEST tokamak](#)



140 students per year
20 PhD students per year

European Master in Fusion and Engineering-Physics

Key international partners : LIA France-Japan ITER Physics Laboratory (FJ-IPL) (Kyushu University, Osaka University, National Institute of Fusion Sciences); MIT; CNESTEN, Université Mohammed V; Members of the Eurofusion consortium, incl. SCK-CEN, JSI.

Overview of the economy of the South of France Region – Provence Alpes Côte d'Azur

A STRONG NETWORK IN THE ENERGY SECTOR



SOUTH OF FRANCE REGION IT'S ALSO QUALITY OF LIFE

PROVENCE



ALPES



CÔTE D'AZUR





Welcome Around ITER, Welcome to the South of France

Testimonies

Thank you for your attention



David LAURENT, Speaker
Expert for the Welcome Around ITER
dlaurent@risingsud.fr / + 33 (0)7 62 90 79 33



aif-wai@cea.fr

7 & 8 April 2021

Remote ITER Business Meeting